



**TANAMAS**  
URBAN PERFECT







Beli rumah di Grand Wisata,  
dengan fasilitas yang **SUDAH LENGKAP !**



**Mall Living World**  
Ready 2024



**Elevated Toll**  
Ready 100%



**Toll JORR II**  
Operating 2024



**LRT**  
Operating July 2023



**KCIC**  
Operating August 2023



**Fasilitas Kesehatan**  
Lengkap









GERBANG TOL SETU UTARA (JORR II)    EAST GATE    COMMERCIAL AREA    GOI WET WATERPARK    LIVING WORLD MALL    WEST GATE    GELAR WAROENG    MARKETING OFFICE    NORTH GATE    LRT STATION

TO JAKARTA (PD INDAH)

JORR II

TO BANDUNG    TO JAKARTA

CIBITUNG INTERCHANGE

KCIC

ELEVATED TOLL

FUTURE LRT

TO JAKARTA (KLP GADING)

KE JAKARTA	15 MENIT
KE BANDUNG	1,5 JAM
KE TOL CIPALI	1 JAM
KE STASIUN LRT	10 MENIT
KE STASIUN KCIC HALIM	20 MENIT
KE BANDARA HALIM	20 MENIT
KE BANDARA SOETTA	45 MENIT



- JORR 1
- JORR 2
- TOL BECAKAYU
- TOL DALAM KOTA
- LRT DARI JAKARTA KE BEKASI TIMUR
- KERETA CEPAT JAKARTA-BANDUNG
- TOL CIKAMPEK
- JALAN PROTOKOL



Tol Jakarta - Cikampek

JORR II

LRT Station

Tol BECAKAYU

Halim Station (KCIC)



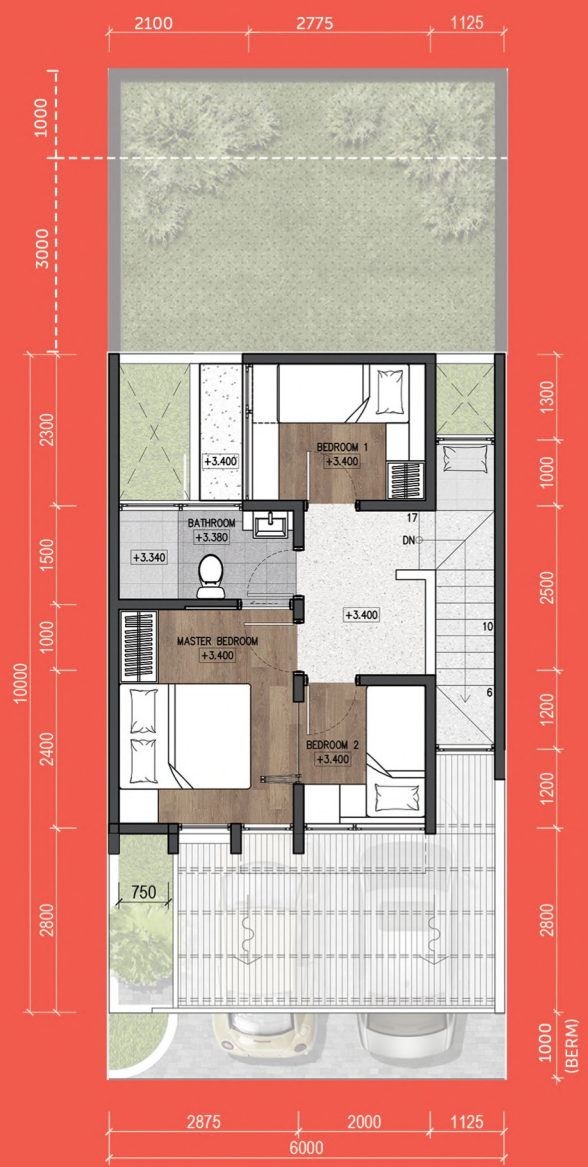


Type 6x10 | 6x13 | 6x14

Luas Bangunan :  
73 m<sup>2</sup>



1<sup>st</sup> Floor



2<sup>nd</sup> Floor



Front Facade



Back Facade



Type 6x20

Luas Bangunan :  
108 m<sup>2</sup>





1st Floor



2nd Floor





LEGENDA	TIPE UNIT (LB/LT)
	73/60 (6x10)
	73/78 (6x13)
	73/84 (6x14)
	108/120 (6x20)



## Specification

### LANTAI

Lantai Utama & Tangga	: Homogeneous Tile
Kamar Tidur	: Homogeneous Tile - corak kayu
Teras Depan & Belakang	: Homogeneous Tile
Kamar Mandi	: Homogeneous Tile - anti slip
Service Area	: Ceramic Tile
Carport	: Homogeneous Tile - anti slip

### PONDASI

: Pondasi Tapak, Batukali & Beton Bertulang

### DINDING

Material	: Batubata diplester dan diaci
Finishing Interior	: Cat Emulsi ex Mowilex / setara
Kamar Mandi	: Homogeneous Tile
Finishing Façade	: Cat Weathercoat + GRC dicat corak kayu

### PLAFON

Material	: Rangka Metalfuring, Penutup Gypsum
Finishing	: Cat Emulsi ex Mowilex / setara

### SANITER

: Ex. American Standard / setara

### ATAP

Rangka Atap	: Baja Ringan
Penutup Atap	: Atap PVC ex. Alderon / setara

### PINTU & JENDELA

Kusen	: Aluminium - powder coating finish
Pintu Utama	: Engineered Door + Handle ex. import
Pintu Kamar	: Engineered Door + Handle ex. import
Jendela	: Aluminium - powder coating finish

### LAIN-LAIN

Listrik	: PLN - 2200 VA
Air Bersih	: Standard PDAM / WTP
Kanopi Carport	: Rangka besi + Penutup Atap ex Alderon / setara
Smart Home	: CCTV IP Camera, Smart Doorlock, Smart Lightswitch



021-2908-8000 / 8262 2273

www.grandwisatabekasi.com